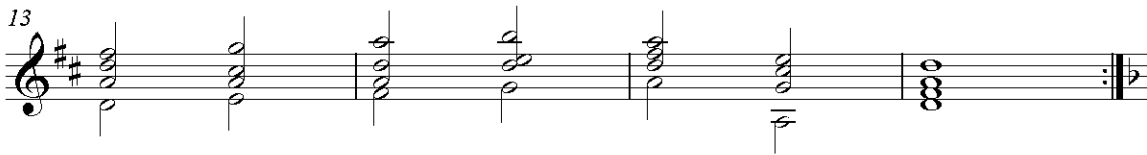
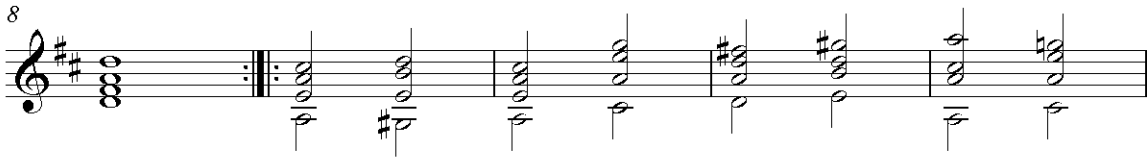
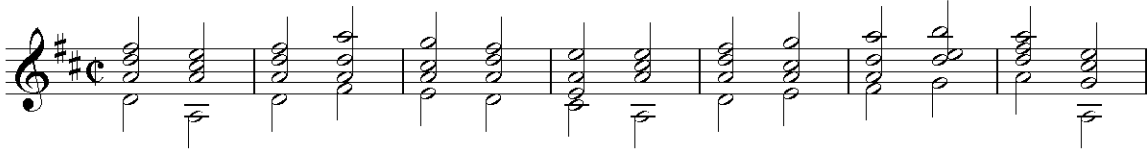


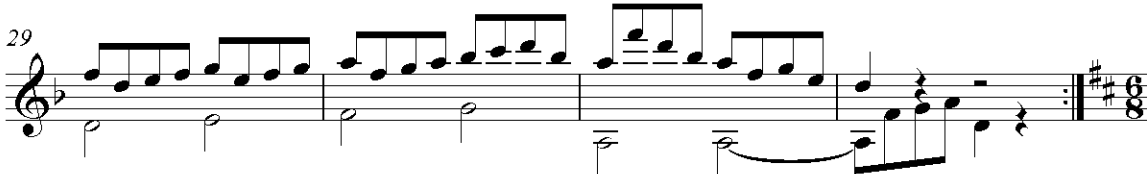
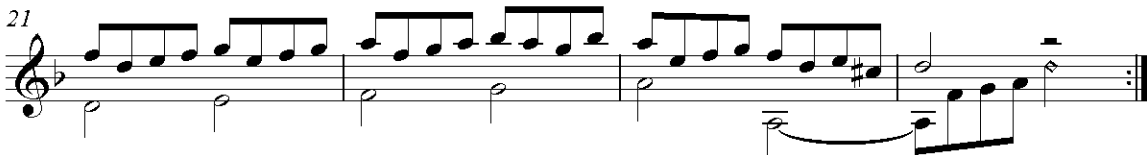
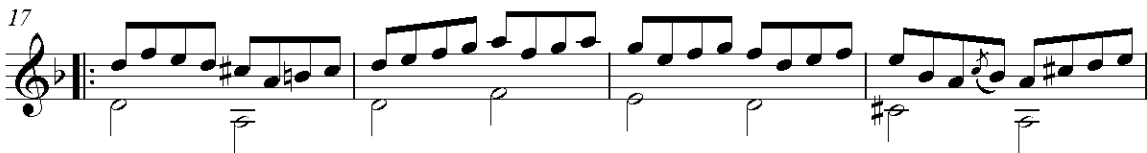
Caprice varié sur un theme d'Aguado

I. Thème

Emilio Pujol



II. Première variation, Mineur



III. Deuxième variation

33 **Gai**

38

43

46

IV. Quatrième variation

49 **Vif**

51

53

Musical notation for measures 53 and 54. Measure 53 features a treble clef, a key signature of two sharps (F# and C#), and a 2/4 time signature. The melody consists of eighth notes with slurs, while the bass line has quarter notes. Measure 54 continues the melodic pattern with a final flourish.

55

Musical notation for measures 55 and 56. Measure 55 shows a treble clef, two sharps, and a 2/4 time signature. The melody is eighth-note based with slurs. Measure 56 features a treble clef, two sharps, and a 2/4 time signature, with a melody of quarter notes and a bass line of quarter notes.

57

Musical notation for measures 57 and 58. Measure 57 has a treble clef, two sharps, and a 2/4 time signature, with a melody of eighth notes and a bass line of quarter notes. Measure 58 continues with a treble clef, two sharps, and a 2/4 time signature, featuring a melody of eighth notes and a bass line of quarter notes.

59

Musical notation for measures 59 and 60. Measure 59 has a treble clef, two sharps, and a 2/4 time signature, with a melody of eighth notes and a bass line of quarter notes. Measure 60 has a treble clef, two sharps, and a 2/4 time signature, with a melody of eighth notes and a bass line of quarter notes.

61

Musical notation for measures 61 and 62. Measure 61 has a treble clef, two sharps, and a 2/4 time signature, with a melody of eighth notes and a bass line of quarter notes. Measure 62 has a treble clef, two sharps, and a 2/4 time signature, with a melody of eighth notes and a bass line of quarter notes.

63

Musical notation for measures 63 and 64. Measure 63 has a treble clef, two sharps, and a 2/4 time signature, with a melody of eighth notes and a bass line of quarter notes. Measure 64 has a treble clef, two sharps, and a 2/4 time signature, with a melody of quarter notes and a bass line of quarter notes.